

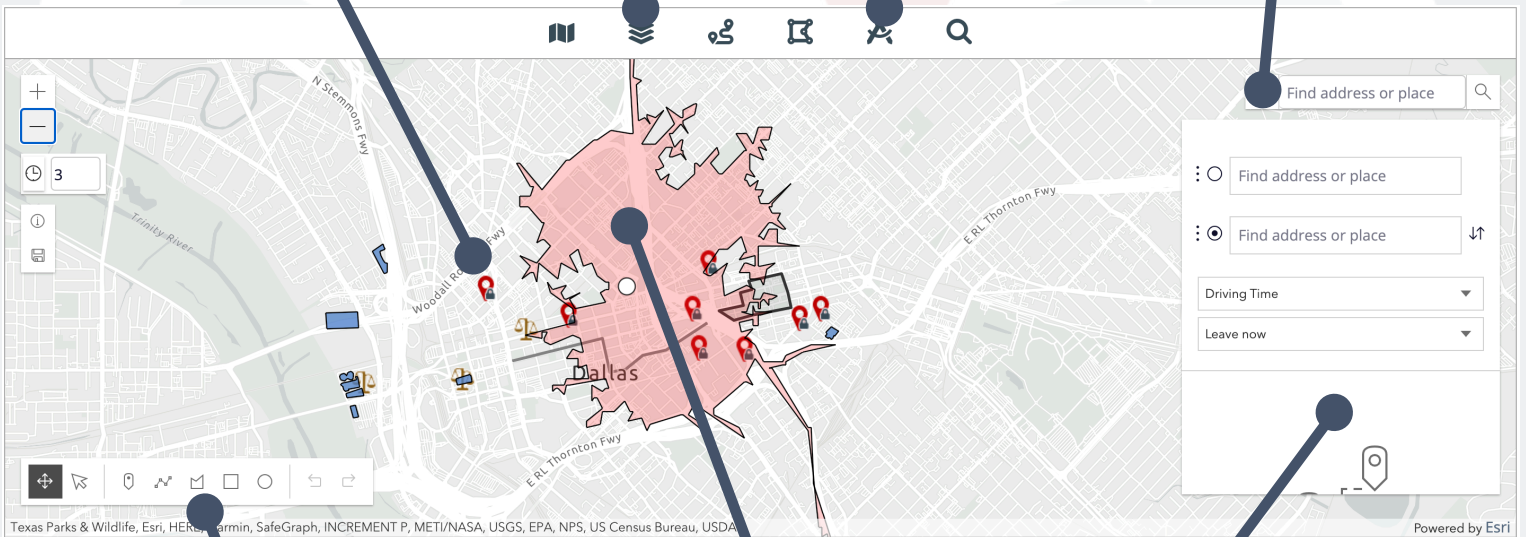
STC GEOSPATIAL COMPONENT

Include maps and layers from any ESRI instance on-site or on the internet

Search your displayed data or the entire world of addresses and points of interest

Drop pins anywhere on the map to create points of interest that are important to the case you're viewing

Measure any distance or area on the map



Annotate your map by drawing directly on it, and share those drawings with other users

Get directions from A to B (... to C ... to D)

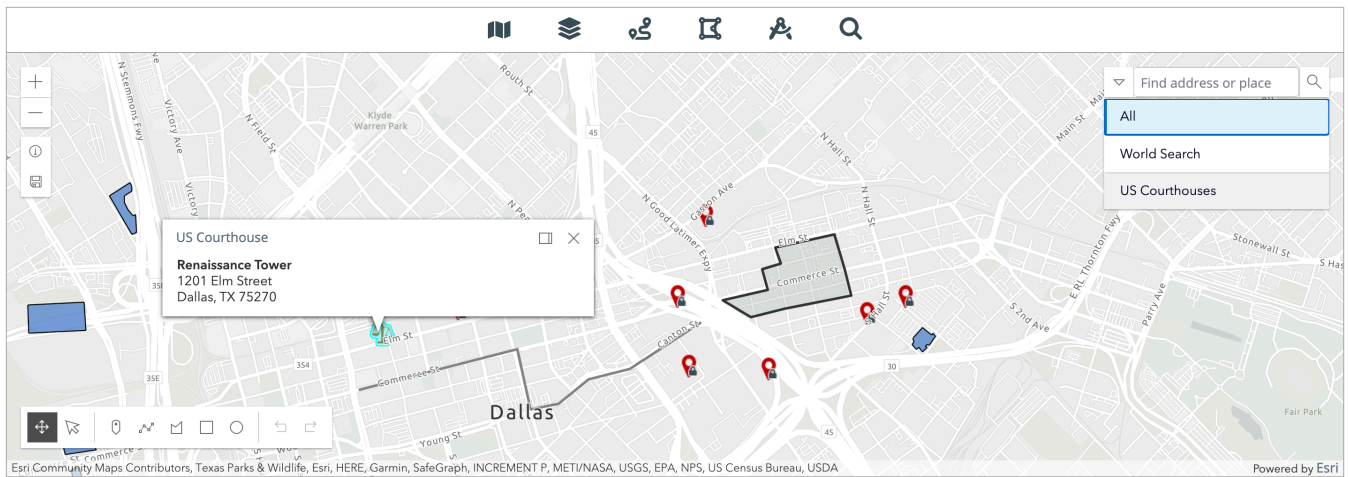
How far can you get from any point on the map within a specified time?

The bridge between Pega Infinity and your Geospatial data

STC GEOSPATIAL

Since the advent of smartphones combined with GPS, we have grown accustomed to persistent awareness of where we are. Where we are relative to our cars, where we are relative to a particular store, where we are relative to one another. Why should our business systems not also share that awareness?

ENTER THE STC GEOSPATIAL COMPONENT



STC Geospatial provides a drop-in solution allowing deep integration between Pega Infinity and the ESRI ArcGIS platform and expansive configuration options allowing your users to interact with geo data, case data, and one another.

WITH STC GEOSPATIAL, YOU CAN

- Display data from any ESRI portal and feature layer to which you have access
- Include any data from your Pega Cases and Data that is geospatially tagged
- Search all of the data displayed on the map
- Get directions with as many waypoints as you need
- Click anywhere on the map to highlight the data points that fall within a specified range
- Calculate the serviceable areas within a provided driving time of a given point on the map
- Draw paths and shapes on the map and add notes to them
- Drop pins on the map to denote important places and events
- Share pins and drawings with other users of the system
- Measure both distances and areas on the map
- Configure actions within Pega for data points on the map (either dropped pins or those added from included layers)